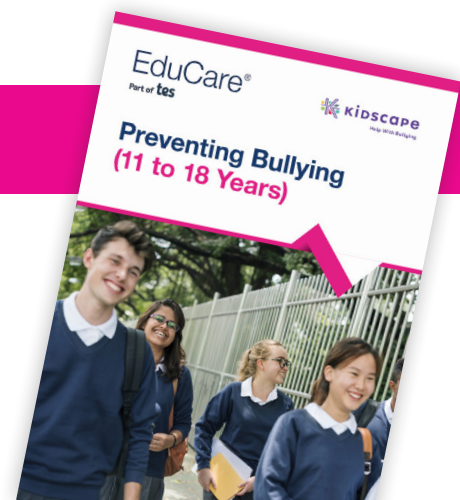


Preventing Bullying (11 to 18 Years)

This course will provide a thorough insight into preventing bullying behaviour, covering the essential facts to help you understand, recognise and tackle bullying behaviour in your organisation or setting. At EduCare we ensure that all of our training courses are written and endorsed by experts. This course has been written in partnership with Kidscape.



Course details

- Four modules with four multiple-choice questionnaires
- Four CPD credits*
- Optional narration of the course modules and questionnaires for accessibility
- Personalised downloadable certificate
- 70% pass mark
- Printable modules for future reference

*1 CPD credit equals up to 1 hour of learning

Course content

Module 1 What is bullying behaviour?

- The definition of bullying.
- Five key components of bullying behaviour.
- Who is affected by bullying.
- Which groups of people are more likely to be affected by bullying.
- Different forms of bullying including racist and/or faith targeted bullying, homophobic, biphobic and transphobic bullying, sexist and sexual bullying and disablist bullying.
- Where bullying occurs.
- Cyberbullying and the role that technology can play.
- The law and bullying, including the Education and Inspections Act, the Education (Independent School Standards) Regulations 2014, the Equality Act 2010 and the Children Act 1989.



Module 2 The effects of bullying behaviour

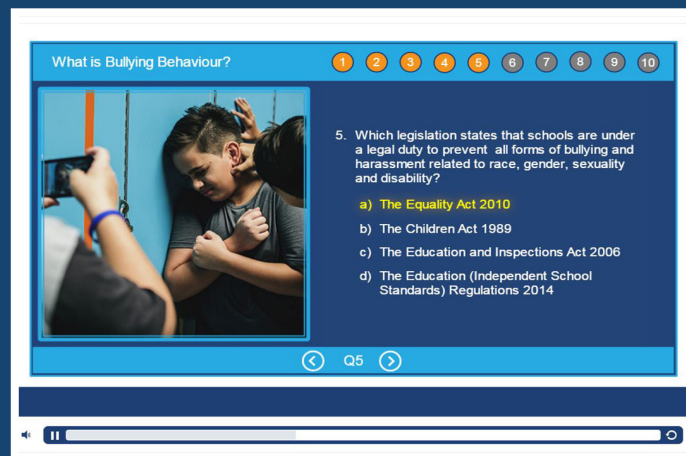
- The typical characteristics of people who may experience bullying behaviour.
- The typical characteristics of those who perpetrate bullying behaviour.
- The difference between observing and participating.
- Behavioural signs to look out for that might indicate a child is being bullied.
- The effects that bullying can have both at the time of the bullying incidents, but also into adulthood.

Module 3 Dealing with bullying behaviour

- The importance of working with all members of your community to agree on a shared definition of bullying.
- The importance of working with all young people in your community to agree acceptable behaviour.
- The importance of creating an anti-bullying policy for your organisation and keeping it up to date.
- Understand what to do in incidents of low level bullying and more serious cases.
- Guidance on how to stop bullying as a group behaviour.
- How to deal with bullying in playgrounds.
- Guidance on dealing with bullying outside school premises.

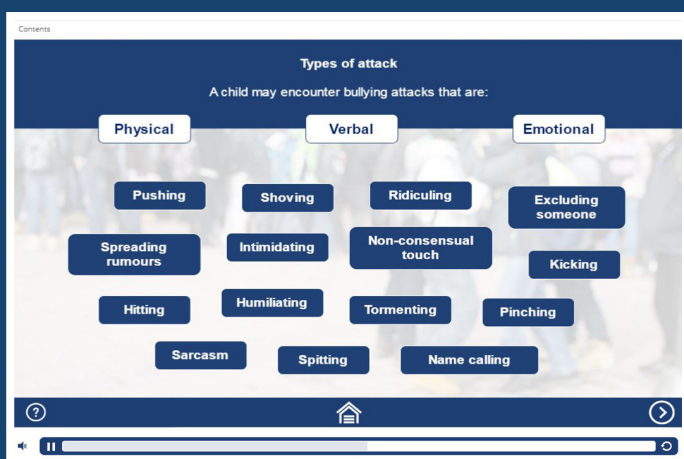
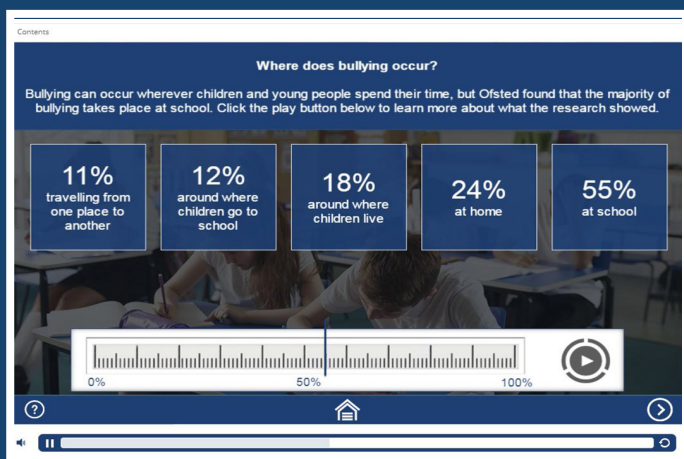
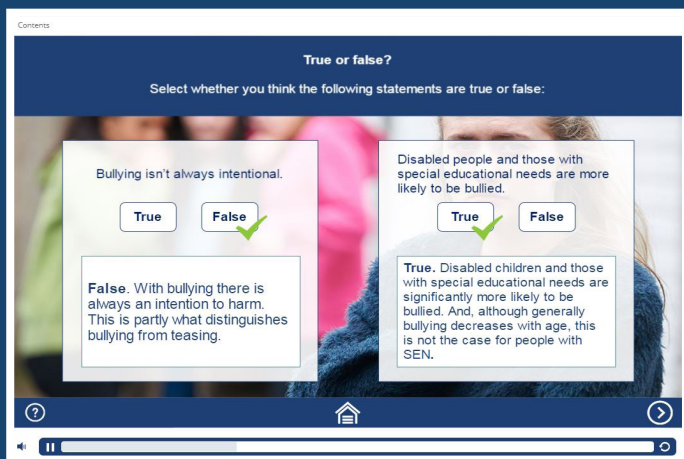
Module 4 Preventing bullying behaviour

- How to develop an anti-bullying policy for your organisation which works on two levels: preventative and reactive.
- Steps to help you develop a new anti-bullying policy or revise an existing one.
- Practical suggestions for developing your anti-bullying policy.
- The importance of providing training and support on anti-bullying for all staff.
- Your individual responsibilities, including supervising carefully, helping young people to become more assertive and being an effective role model.



This course is suitable for

Anyone who comes into contact with children and young people from the ages of 11 to 18 years.



Key features

- Visually engaging and highly interactive
- UK statistics on bullying
- Answer explanations for those who achieve the pass mark
- Additional resources to expand learning

Purchase options

1. Available as a standalone course on the EduCare website.
2. Buy as part of one of our multi-course licences. For further information, please call 01926 436212 to discuss purchase options and licences.



Why choose us?



“ I have now been using the EduCare programme to support understanding in Child Protection and Safeguarding for over 5 years. It is an invaluable resource which allows learners to work at their own pace and also organisations to provide a broad and detailed level of support to staff. ”

Matthew Burfield
Principal/CEO GEMS Education

www.educare.co.uk
01926 436 211
online@educare.co.uk

KIDSCAPE
Help With Bullying

Secured by Design
SBD

CPD
CERTIFIED
The CPD Certification Service

